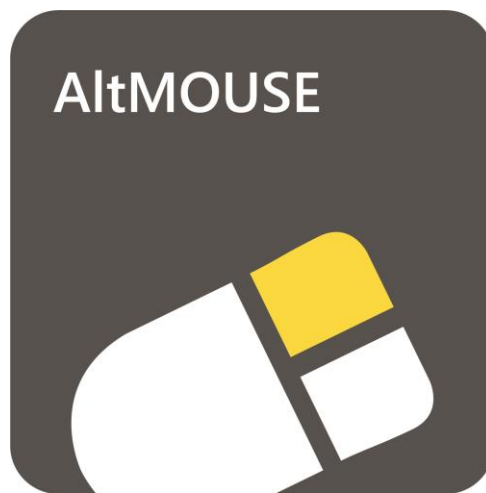




Work Smart - Feel Good

Installation Manual

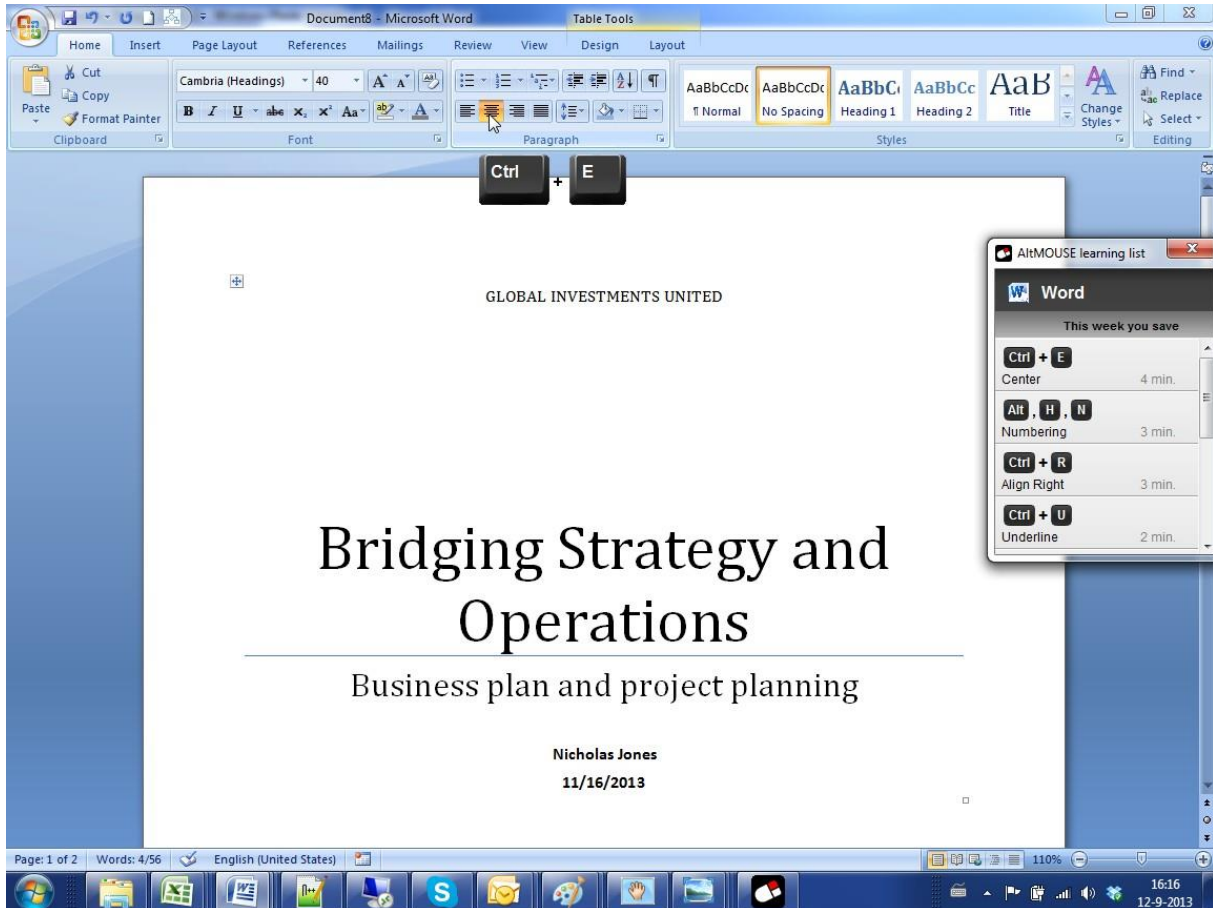


Index

Introduction.....	3
System and Software requirements	4
Supported application	4
Program architecture	5
Registry Settings	5
Shortcut	5
Needed rights after installation	6
Installation	6
Preparation	6
Installation Steps.....	6
Startup for the first time	10
Application Health Check	11
Application virtualization	11
Customizing client application	11
Change path to User folder	11
Replace/change RootSettings.xml during installation	12
Replace/change RootSettings.xml after installation	12
Change default user settings	12
Support	14

Introduction

AltMOUSE is a program to learn shortcut keys. It records the actions performed with the mouse and advises shortcuts for these mouse actions. The user gets weekly reports and is prompted shortcut key hints when hovering over a button and when clicking on a button.



System and Software requirements

To be able to use the AltMOUSE software, your system needs to have the following requirements

Part	Requirement
Processor	1 gigahertz (GHz) or faster(x86 bits/ x64) processor
Internal memory	2GB RAM
Harddisk	150 MB (including the 10 MB user folder)
Screen resolution	Minimal 1024 x 768
Operating system	Windows 8.1, Windows 8, Windows 7, Windows Server 2012 R2, Windows Server 2012, Windows Server 2008 R2 of Windows Server 2008

NOTE: Widows 10 is not supported.

Supported application

The following applications are support by AltMOUSE

Application	Version	Language
Word	2007,2010 and 2013	Dutch, English and German
Excel	2007,2010 and 2013	Dutch, English and German
Power point	2007,2010 and 2013	Dutch, English and German
Outlook	2007,2010 and 2013	Dutch, English and German
Windows	Windows 8.1, Windows 8, Windows 7, Windows Server 2012 R2, Windows Server 2012, Windows Server 2008 R2 of Windows Server 2008	Dutch, English and German
Internet Explorer	11.0	Dutch, English and German
Firefox	35.0	Dutch, English and German
Chrome	40.0	Dutch, English and German
Lotus Notes	8.5.3	Dutch and English

Program architecture

AltMOUSE has an application folder and a user folder. The program loads settings & license info from the user folder.



Content	User settings & License for current user	User settings & License for new user
Contains loaded settings & License?	Yes	No
Default location	Default location: %appdata%\EfficiencySoftware	Default location: C:\Program Files\EfficiencySoftware

Default application folder:

- C:\Program Files\EfficiencySoftware (32 bit machine)
- C:\Program Files (x86)\EfficiencySoftware (64 bit machine)

Default user folder:

- C:\Users\“user name”\AppData\Roaming\Efficiency Software\

Note: It is possible to change the location of the user folder. In the rootsettings.xml it is possible to amend the user folder path by changing value for:
`<UserFolderLocation>APPDATA</UserFolderLocation>`

A new location for the user folder could be for example:
`<UserFolderLocation>C:\Temp\SSC</UserFolderLocation>`

Registry Settings

The following registry setting is created during installation in order for automatic startup of the program:

All users install:

HKLM-Software-Microsoft-Windows-CurrentVersion-Run-AltMOUSE

For 64 bit machines the location might be:

HKCU\HKLM-Software-Wow6432node-Microsoft-Windows-Currentversion-RUN

Shortcut

The following shortcut is created during installation:

Start menu-All Programs-EfficiencySoftware-AltMOUSE.Ink

Needed rights after installation

The rights of a default domain user are sufficient. Specifically, the following rights are necessary:

- User Folder: Read + Execute + Write
- Install Folder: Read + Execute
- Registry: Read + Execute

Installation

The installation file can be download here:

<https://www.bakkerelkhuisen.com/productsupport/software/altmouse/downloads/>

Preparation

Unpack the provided ZIP file or EXE.

It will contain the following files:

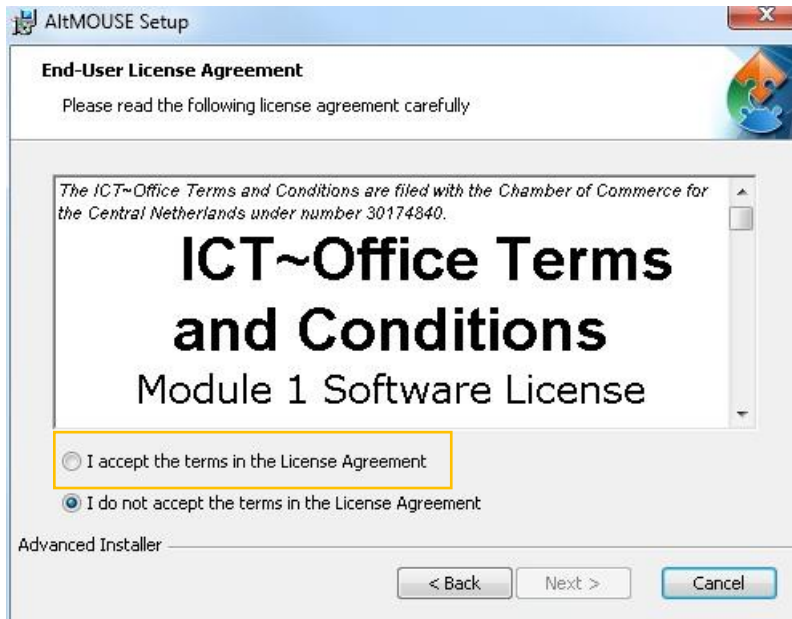
- Data.key: License Key
- Settings.xml: See Change default user settings
- RootSetting.xml: See Change default user settings
- Setup.msi: Installation file. This MSI will check whether the Microsoft Visual C++ 2013 X86 Redistributable has been installed. If not, it will install this component. Then ALtMOUSE will be installed.

Installation Steps

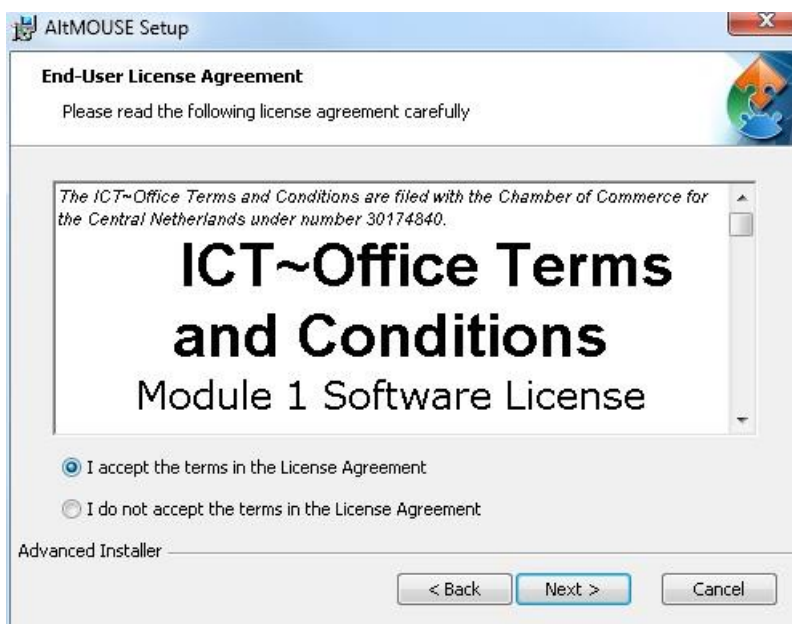
Open the file setup.msi to start the installation.



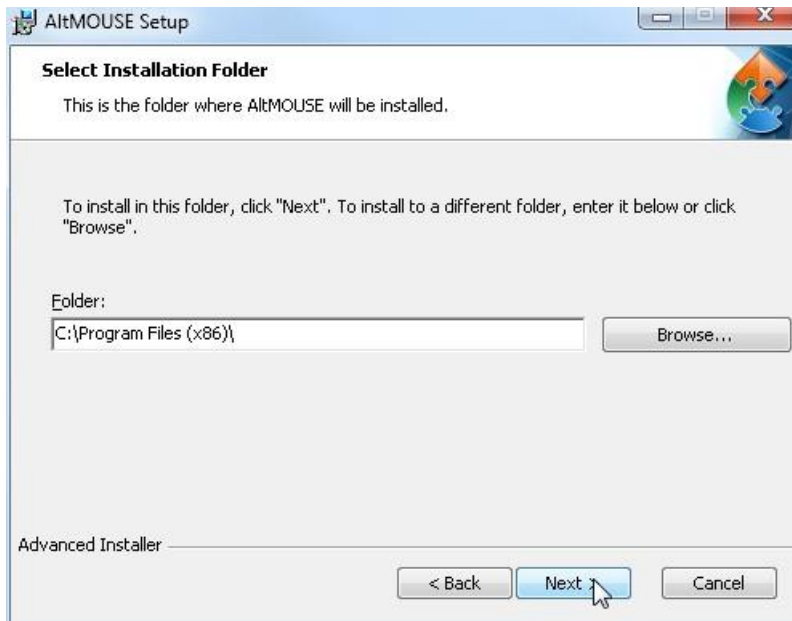
Click 'Next'



Select 'I accept the terms in the License Agreement'

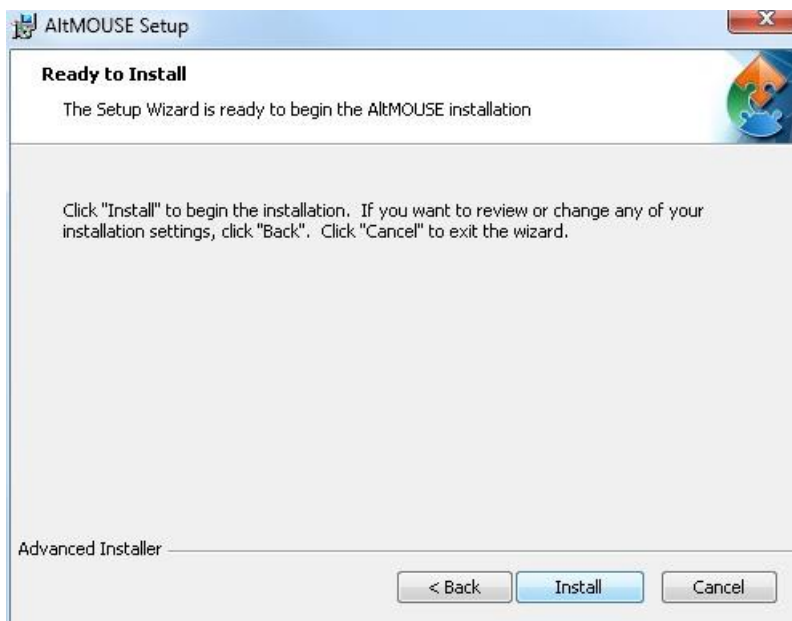


Click 'Next'



Click 'Next'.

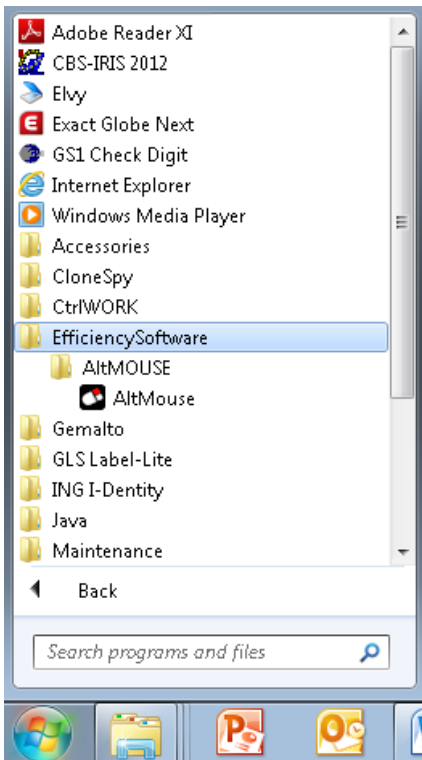
Note: the folder EfficiencySoftware will be created. The folder EfficiencySoftware contains the AltMOUSE program.



Click 'Install'



AltMOUSE can be started either by selecting the Launch AltMOUSE button or via Start-All Programs-EfficiencySoftware-AltMOUSE.



Startup for the first time

The following screens you will see when AltMOUSE is started up for the first time.



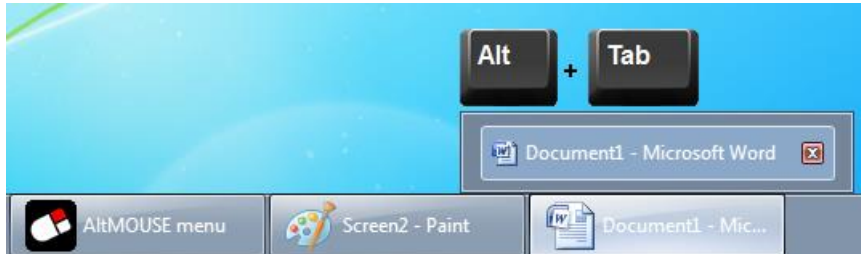
Select the language you would like.



Select the amount of shortcut keys you would like to learn in a week.

Application Health Check

The first health check is to open Microsoft Word when AltMOUSE is active. Hover with the mouse cursor over the icon in the task bar. The shortcut key hint "Alt+Tab" should be shown:



When a supported application does not provide a shortcut key hint. Please open the tab settings in AltMOUSE and click the button "Supported application". This will open a new window where you can select the version and language of the support application. If you have question or need assistants, please contact the helpdesk via:

<https://www.bakkerelkhuisen.com/productsupport/software/altmouse/helpdesk/>

Application virtualization

There are a lot of different ways to virtualize the application for example Citrix, APP-V, Res Workspace etc. The challenge in getting the virtualized application to work is, it needs to be allowed to interact with the local machine. Because of the different versions and software for application virtualization it is not possible to write a standard manual for it. Questions regarding virtualization please contact the helpdesk.

<https://www.bakkerelkhuisen.com/productsupport/software/altmouse/helpdesk/>

NOTE: Support for virtualization is not covered by the standard SLA.

Customizing client application

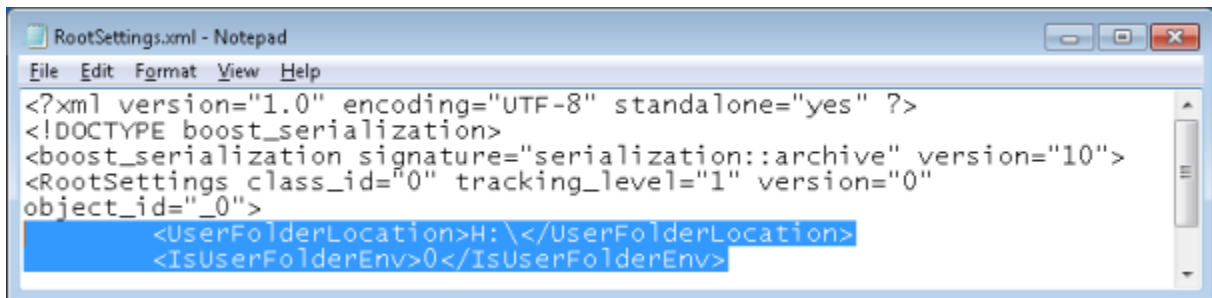
Change path to User folder

In the file 'RootSettings.xml' the path to the end user settings and data can be modified. The user data files contain information on computer usage statistics and info on user settings. Default location is C:\Users\"user name"\AppData\Roaming\CtrlWORK\

Important: before changing the path to user data files, make sure the process AltMOUSE.exe is not running any longer via Task Manager-Processes-End process AltMOUSE.exe or by choosing exit from the right click menu of the AltMOUSE icon in the task tray.

The location of the folder can be changed with the RootSettings.xml. The default location is Application folder\RootSettings.xml (default on 64 bit machine: C:\program files(x86)\EfficiencySoftware\RootSettings.xml).

Note: That <PathToLocalData> should be a unique path for each user, since otherwise the data of multiple users will be combined, and the usage statistics are no longer valid.



```

RootSettings.xml - Notepad
File Edit Format View Help
<?xml version="1.0" encoding="UTF-8" standalone="yes" ?>
<!DOCTYPE boost_serialization>
<boost_serialization signature="serialization::archive" version="10">
<RootSettings class_id="0" tracking_level="1" version="0"
object_id="_0">
  <UserFolderLocation>H:\</UserFolderLocation>
  <IsUserFolderEnv>0</IsUserFolderEnv>

```

In the example above the User folder location is H:\EfficiencySoftware. The folder EfficiencySoftware will be created and does not need to be part of the value of the <UserFolderLocation>. **Note** you need to change <IsUserFolderEnv> to "0".

Replace/change RootSettings.xml during installation

Place the rootsettings.xml in the same folder as the MSI, Settings.xml and license. Run the MSI.

Replace/change RootSettings.xml after installation

Replace modified RootSettings.xml to %programfiles%\CtrlWORK folder (or %programfiles(x86)%\CtrlWORK folder for 64 bit machines).

Change default user settings

The file setting.xml is part of the installation files. Before installation a number of settings can be pre-determined, see the table below.

Setting	Description
licenseTabVisible	(1 0) License tab visibility in the Help Tab. 0: no 1: yes Default value: 1
settingsWizardFirstStart	(1 0) Show setup wizard at first start-up. 0: no 1: yes Default value: 1
languageInSettingsWizzard:	(1 0) Show language choice menu at first start-up 0: no 1: yes Default value: 1
shortcutStayTime	(Number) Number of milliseconds a hint remains visible after clicking on it. When a user stays with mouse cursor on button

	<p>location the visible time of the hint is doubled.</p> <p>Default value: 1000</p>
defaultReportToShow	<p>(0 1 2) Determines which Report is shown by default</p> <p>0: Feedback 1: Applications 2: Shortcut Keys</p> <p>Default: 0</p>
selectedProfile	<p>(1 2 3) Determines default settings profile.</p> <p>1: Maximum support 2: Custom support 3: No support</p> <p>Default value: 2</p>
numberOfLearningListEvents	<p>(Number) Determines default number of learning list events.</p> <p>Default value: 3</p>
showLearningListOnStartup	<p>(1 0): Determines default visibility of learning list</p> <p>0: no 1: yes</p> <p>Default value: 0</p>
reportInterval	<p>(0 1) Determines default visibility of weekly report</p> <p>0: yes 1: no</p> <p>Default value: 0</p>
reportType	<p>(0 1) Shows default prompting when a new report is available</p> <p>0: Show AltMOUSE menu 1: Show notification in tray</p> <p>Default value: 0</p>
licenseNetworkLocation	<p>Setting for central license key (data.key) location</p> <p>Default value: <empty></p>
language	<p>(Deutsch English Nederlands) Language of the application</p> <p>Default value: English</p>
LearningListLocation	<p>(x,y):Determines X and Y coordinate of the location of the left upper corner of the learning list. This settings is saved automatically upon</p>

	closing the application / shutting down the computer. Default value (-1,-1): meaning the application takes the default location. At the right side of the screen in the middle.
synchEnabled	(0 1) Server synchronisation 0: Off 1: on Default: 0
synchURL	Path to the server
getBenchmarkDataURL	URL to the benchmark server
ShowBenchmarkData	(0 1) Show benchmark data 0: Off 1: ON Default: 0
EventUsageUnit	(0 1) Time or Clicks saved 0: saved Clicks 1: Save time in minutes Default: 0 Clicks
LearninglistRefreshPeriod	(3 4 5 6 7) Interval to create a new learning list in days. Default: 3 (Days)
topHintEnabled	(0 1) Show most used key hint all the time. 0: No 1: Yes Default: 0

Support

Please contact us directly via the form on

<https://www.bakkerelkhuisen.com/productsupport/software/altmouse/helpdesk/>

FAQs and other materials can be found via

<https://www.bakkerelkhuisen.com/productsupport/software/altmouse/>